

Valves for Cryogenic Service

Type 08417 - Strainer



Cryogenic-Strainer, PN50 (DN100=PN40, DN150=DN25)

Stainless steel body and cap
with strainer screen mesh size 0.25 mm
" cleaned and degreased for oxygen service "

Part No. 08417.X.000*

*Butt weld connection for stainless steel pipes acc. to DIN EN ISO 1127 or ASTM A312

Part No. 08417.X.0004

Socket weld connection for stainless steel pipes acc. to DIN EN ISO 1127 and ASTM A312

Available options - on request only:

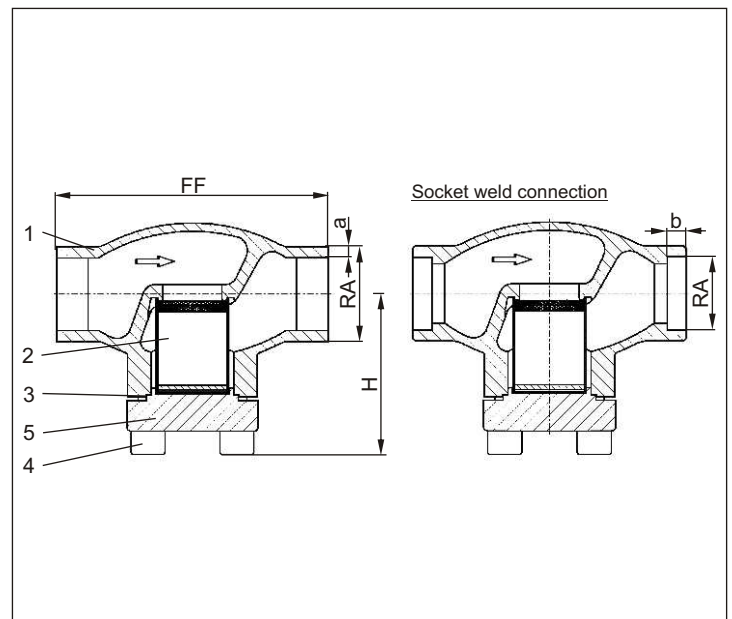
- Welded stainless steel stubs acc. to DIN EN ISO 1127 or ASTM A312 - length FF + 150mm
- other mesh sizes for strainer screen (changed flow coefficient)



Applications:

Approved for air gases, vapours and cryogenic liquefied gases incl. LNG.
Working temperature: -196°C / -321°F (77K) up to +120°C / +248°F (393K)

Materials	DIN EN	ASTM
1 Body	1.4308	A 351 CF8
2 Strainer screen	1.4301	A 240 Grade 304
3 Bonnet gasket	PTFE	
4 Bolts	1.4301/A2	A 194 B8
5 Cap	1.4301	A 276 Grade 304



Standard marking acc. to Pressure Equipment Directive 97/23/EG (PED).



Marking acc. to Directive 99/36/EG (TPED) will only be carried out by written notice on purchase order.



Type 08417 – Standard	Technical data													
	DN	10	15	15	20	25	32	40	40	50	65	80	100	150
Nominal size	.X.	1012	1517	1521	2026	2533	3238	4042	4048	5060	657x	8088	0114	0168
Dimension code	FF	70	85	85	100	115	115	130	130	155	205	245	280	400
Face-to-face dimension	H	62	62	62	65	69	76	89	89	89	125	150	166	215
Height	RA	12.0	17.2	21.3	26.9	33.7	38.0	42.4	48.3	60.3	76.1	88.9	114.3	168.3
Outside pipe-Ø EN ISO 1127	a	1.0	1.6	2.0	2.0	2.0	2.0	2.0	2.0	2.0	2.6	3.2	6.0	7.1
Wall thickness pipe EN ISO 1127	RA	13.72	17.15	21.34	26.67	33.40	-	42.16	48.26	60.33	73.03	88.90	114.3	168.3
Outside pipe -Ø ASTM A312	a	S10	S40	S10	S10	S10	-	S10	S10	S10	S40	S10	S40	S40
Wall thickness pipe ASTM A312	b	6	10	10	13	13	-	13	13	16	16	16	20	20
Socket depth	ca. kg	0.6	0.75	0.8	0.9	1.2	1.8	3.1	3.1	4.7	8.9	13.6	18.0	48.0
Weight	m ³ /h	1.5	3.4	3.4	6.5	9.5	14.0	19.0	21.0	28.0	62.0	90.0	118.0	300.0
Kvs – Value	gal /min	1.7	3.9	3.9	7.5	11.0	16.2	22.0	24.3	32.4	71.7	104.0	136.4	346.8
Cv – Value														

Dimensions in mm.